

3-in-1 Hot Water Tap Assembly & Instructions



CARRON
P H O E N I X

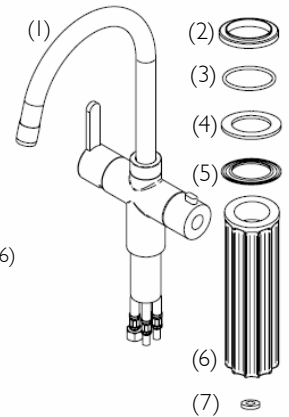
Introduction

TAP is suitable for dispensing boiling water (100°C) as well as normal hot and cold water and is for domestic kitchen use only. The connections of the mixer section can be connected with the filter valves directly to the hot and cold water mains. The boiling water hose of TAP should be directly connected to the heating tank (please see Heating Tank instructions).

In this instruction leaflet are the instructions for the correct and safe use of TAP. If TAP is not installed according to the following instructions, your warranty is rendered invalid. The manufacturer is not liable for damages resulting from non-compliance with the installation or user instructions.

Package Contents

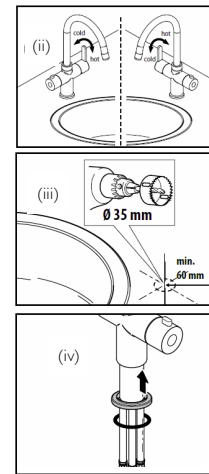
- 1 x TAP (1)
- 1 x plinth (2)
- 1 x seal (3)
- 1 x rubber gasket (4)
- 1 x clamp plate (5)
- 1 x locking spanner (6)
- 1 x gasket (7)



Installation Instructions **Caution:** TAP must only be connected to the Carron Phoenix heating tank.

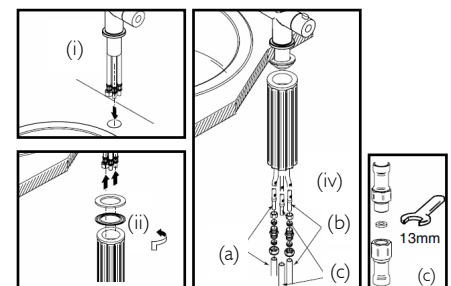
Preparation:

- i) Mount the heating tank following the separate heating tank instructions
- ii) Locate TAP on the sink or worktop.
Note: Be sure to place the tap to suit left or right handedness. TAP provides 100°C water; therefore we recommend you position the spout opposite to the boiling water control to avoid scalding. Bear in mind position of the sink bowl. You can reverse the hot and cold water operation by exchanging the position of the hot and cold water hoses within the tap body.
- iii) If mounting TAP directly on to the worktop, drill a hole $\varnothing 35\text{mm}$ at least 60mm from the wall or back of the worktop.
- iv) Slide the plinth (2) and o-ring (3) over the base of the tap.



Mounting

- i) Slide TAP with the flexible hoses attached through the drilled tap hole in your sink or worktop.
- ii) Slide the gasket (4) and retaining plate (5) on to the threaded tube.
- iii) Tighten the locking spanner (6) firmly.
- iv) Connect the flexible boiling water hose of the tap to the boiling water hose of the heating tank. Make sure to fit the gasket (7) between both hoses.
- v) Connect the hot and cold water hoses with the mains pipe.

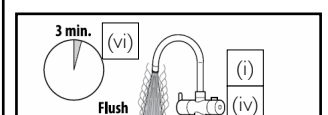
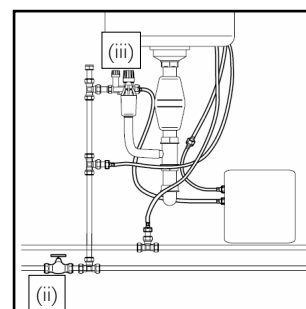


- (a): cold water (10mm compression fitting)
- (b): hot water (10mm compression fitting)
- (c): boiling water (connection M10 x 1.25 & gasket)

Caution: Place the gasket between the hose of the tap and the hose of the tank. A spare gasket is supplied with the tank.

Filling and venting the heating tank

- i) Close the boiling water tap.
- ii) Open the mains valve.
- iii) Open the inlet valve of the pressure relief valve.
- iv) Open the boiling water tap.
- v) Wait until water flows from the tap.
- vi) Let the water flow for 3 minutes until clear water flows from the tap.
- vii) Check for leaks and rectify as necessary.



Continue with installation of heating tank following heating tank installation instructions.

