

3-in-1 Hot Water Tap Assembly & Instructions



CARRON
P H O E N I X

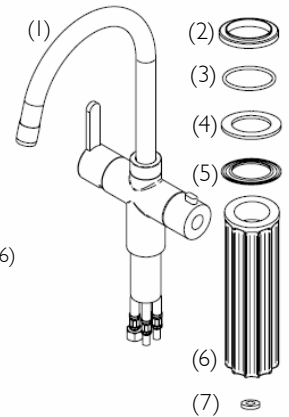
Introduction

TAP is suitable for dispensing boiling water (100°C) as well as normal hot and cold water and is for domestic kitchen use only. The connections of the mixer section can be connected with the filter valves directly to the hot and cold water mains. The boiling water hose of TAP should be directly connected to the heating tank (please see Heating Tank instructions).

In this instruction leaflet are the instructions for the correct and safe use of TAP. If TAP is not installed according to the following instructions, your warranty is rendered invalid. The manufacturer is not liable for damages resulting from non-compliance with the installation or user instructions.

Package Contents

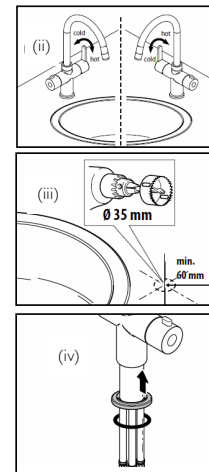
- 1 x TAP (1)
- 1 x plinth (2)
- 1 x seal (3)
- 1 x rubber gasket (4)
- 1 x clamp plate (5)
- 1 x locking spanner (6)
- 1 x gasket (7)



Installation Instructions **Caution:** TAP must only be connected to the Carron Phoenix heating tank.

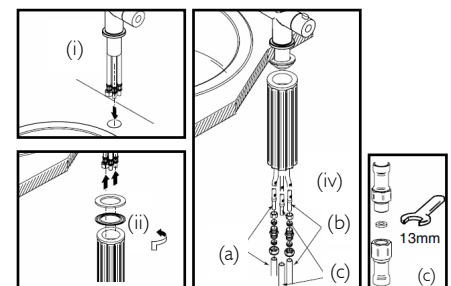
Preparation:

- i) Mount the heating tank following the separate heating tank instructions
- ii) Locate TAP on the sink or worktop.
Note: Be sure to place the tap to suit left or right handedness. TAP provides 100°C water; therefore we recommend you position the spout opposite to the boiling water control to avoid scalding. Bear in mind position of the sink bowl. You can reverse the hot and cold water operation by exchanging the position of the hot and cold water hoses within the tap body.
- iii) If mounting TAP directly on to the worktop, drill a hole $\varnothing 35\text{mm}$ at least 60mm from the wall or back of the worktop.
- iv) Slide the plinth (2) and o-ring (3) over the base of the tap.



Mounting

- i) Slide TAP with the flexible hoses attached through the drilled tap hole in your sink or worktop.
- ii) Slide the gasket (4) and retaining plate (5) on to the threaded tube.
- iii) Tighten the locking spanner (6) firmly.
- iv) Connect the flexible boiling water hose of the tap to the boiling water hose of the heating tank. Make sure to fit the gasket (7) between both hoses.
- v) Connect the hot and cold water hoses with the mains pipe.

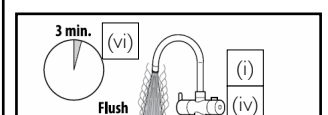
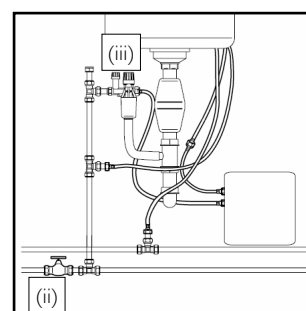


- (a): cold water (10mm compression fitting)
- (b): hot water (10mm compression fitting)
- (c): boiling water (connection M10 x 1.25 & gasket)

Caution: Place the gasket between the hose of the tap and the hose of the tank. A spare gasket is supplied with the tank.

Filling and venting the heating tank

- i) Close the boiling water tap.
- ii) Open the mains valve.
- iii) Open the inlet valve of the pressure relief valve.
- iv) Open the boiling water tap.
- v) Wait until water flows from the tap.
- vi) Let the water flow for 3 minutes until clear water flows from the tap.
- vii) Check for leaks and rectify as necessary.



Continue with installation of heating tank following heating tank installation instructions.



Operation of boiling water function

When you start to use TAP, always flush a cupful of residual water. This will eliminate the air bubbles from the surface water of your drink.

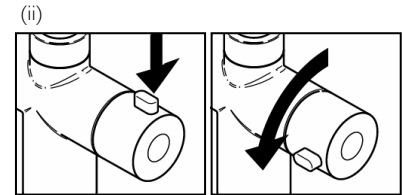
Caution: TAP delivers 100°C water and care should be taken to avoid scalding.



This appliance is not intended for use by children, users with a physical or mental disability or user with insufficient knowledge, unless they have received instruction on the operation of the appliance.

TAP is fitted with a childproof control button which requires a push and turn action to operate.

- i) It is advisable to hold your cup, teapot or saucepan close to the outlet of the tap spout. This will prevent the water from splashing and enable you to operate TAP safely.
- ii) Press the release button and turn the handle.
Note: releasing the button will automatically shut off the boiling water supply.



Operation of hot/cold water

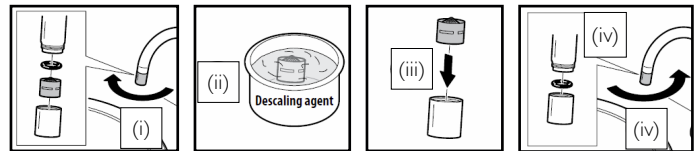
Utilise the TAP lever in the conventional way for the normal supply of normal hot/cold water.

Maintenance

Depending on your geographic location and the quality of your water, the aerator on the tap may eventually calcify. Only use cleaners containing citric acid as other cleaning agents may affect the material.

Tap aerator decalcification

- i) Unscrew the aerator collet.
- ii) Clean the aerator with a suitable cleaning agent.
- iii) Replace the aerator into the collet
- iv) Replace the o-ring on the aerator and tighten.



Troubleshooting

Complaint	Likely cause	Solution
Water leak	Connection leak	Tighten connection or replace it.
Tap does not supply boiling water		See Heating Tank instructions
TAP does not supply any water		Check whether mains water valve and pressure relief valve are open. Alternatively, please contact after-sales agent.
TAP only supplies cold water		See Heating Tank instructions
Reduced water flow or splashing water	Debris or calcium deposits in tap aerator	Descal the lime deposits in tap aerator

This appliance is guaranteed by Carron Phoenix to be free from material and manufacturing defects. This warranty is subject to the following terms and conditions:

The Carron Phoenix TAP is guaranteed against manufacturing defects and defective materials and workmanship for **2** years. Carron Phoenix will, where appropriate, provide replacements for your tap and their discretion. Any associated or ancillary costs to be incurred by you as a result of replacement of the tap or parts under this guarantee shall in all cases be previously approved by Carron Phoenix.

This guarantee is in addition to and does not affect your statutory rights.

After sales services department:

Tel: **0161 436 6280**